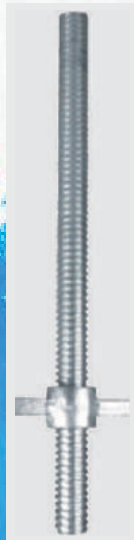




SARAH ENTERPRISES



**MANUFACTURERS OF
SCAFFOLDING & FORMWORK
SYSTEMS & FITTINGS**

Contact : +91 7506768114 / +91 8657748070

ABOUT US

Manufacturer & Supplier :

- **Cantering.**
- **Scaffolding Material.**
- **Scaffolding.**
- **Sale Purchase / Rent Basis.**
- **All Kind of Scrap Merchant.**

“The Scaffolding People” - is the title conferred on us by the construction industry as a token of recognition to our memorable service for the last two decades. By various innovations and numerous modifications we have made a remarkable contribution to the construction cause with our excellent quality products of Scaffolding / Formwork and Structural Steel Fabrication. With in-built manufacturing facilities equipped with highly motivated and experienced personnel we make a very wide range of products that excel in quality. Apart from scaffolding we have proved our ability and caliber in Heavy Steel Structural Fabrication.

The longest list of our renowned customers stand as evidence to our excellence in the field. It is not every manufacturer... It is not every company... that can give you such quality products and hence our name and our product still stands fast without a parallel in the entire field. Our effort in improvising the services and quality to various industries would be unconditional and continuous.

In addition to the above we are pioneer in setting up Turnkey Projects for Foundries, Forging Plants, Tube Mills and Re-rolling Mills.

Yours sincerely,

SARAH ENTERPRISES

INDEX

• MANUFACTURING FACILITY	1.
• PROJECTS	3.
• CUPLOCK SYSTEM	5.
• ADJUSTABLE JACKS	8.
• SCAFFOLDING COUPLERS	9.
• WALKWAY PLANKS / PLASTER PHALLY	10.
• ANTI SKID PLANKS	11.
• ADJUSTABLE PROPS	12.
• CUPLOCK STAIR TOWER	13.
• FORMWORK SYSTEMS	14.
• H-FRAMES / TELESCOPIC SPANS	16.
• SCAFFOLDING & FORMWORK FITTINGS	17.
• GALLERY	18.

PROJECT



Permanent Steel Structure for
Glass Capsule Lift



Specially Designed Support System for
casting the Suspended Slab at 34th Floor



SARAH ENTERPRISES

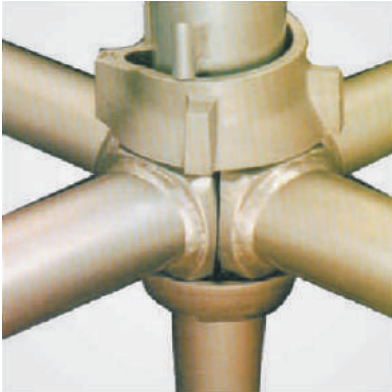
PROJECT



CUPLOCK SYSTEM

CUPLOCK SYSTEM

Cuplock System is one of the most efficient supporting system. It provides simplicity & versatility with simple erection & dismantling procedures. It is also used for various jobs like Construction, Ship Building Maintenances, Offshore, etc.



Verticals are also known as Standards, made from high quality steel tubes with a set of Top & Bottom Cups arranged at a distance of 500mm. The Forged Blade Ends of the Horizontals (Ledgers) are placed into the Bottom Cup & the Top Cup is moved down and rotated to secure the components in place, and tightened by a hammer blow. Verticals are available in different lengths from 0.5 mtr. to 3.0 mtr. Verticals are connected by Spigots or Sockets.



Horizontals are also known as Ledgers and they are tied to the Vertical to make a proper Scaffold. They are available in different lengths as per the customers' requirement. The length of Horizontal is calculated between center to center of two Verticals.



SPIGOT

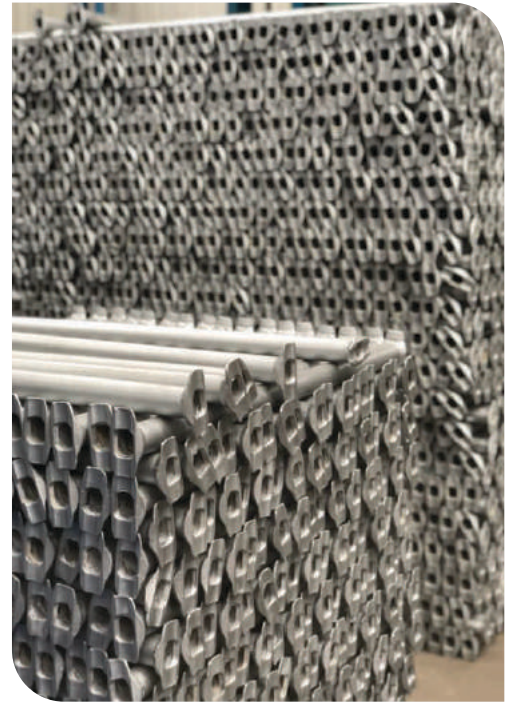
CUPLOCK SYSTEM



Sr. No.	Sizes	Cups
1	3000 mm	6
2	2500 mm	5
3	2000 mm	4
4	1500 mm	3
5	1000 mm	2
6	0500 mm	1



LADGER SYSTEM



Sr. No.	Sizes	Blades
1	2450 mm	2
2	1750 mm	2
3	1450 mm	2
4	1150 mm	2
5	0950 mm	2



ADJUSTABLE JACKS



UNIVERSAL JACK



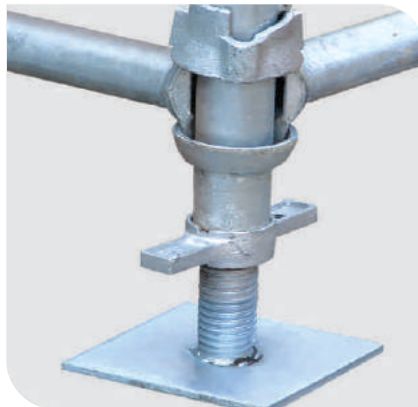
BASE JACK



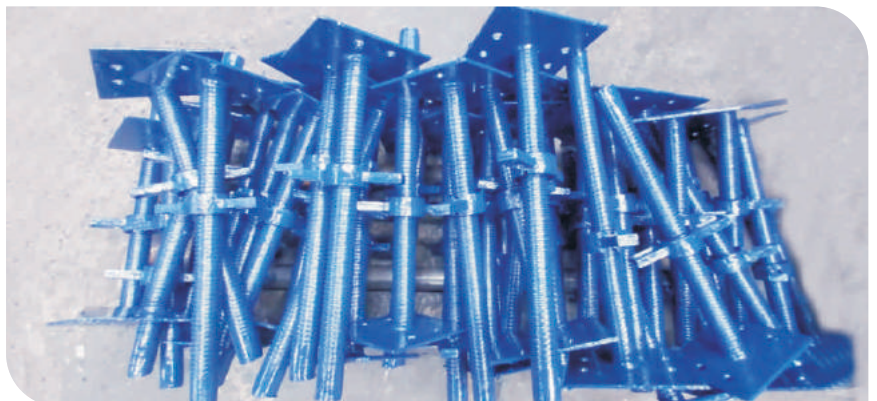
U HEAD / STIR-UP HEAD

Ø (mm)	Height (mm)	Type
32	350/450	Solid
34/36	600	Solid
38	650	Hollow

Adjustable Jacks are manufactured in hollow steel tubes & steel round bars. They are made on hydraulic roll threading machine for smooth & easy operation even during load. These jacks generally used at the bottom of scaffold are known as Base Jacks & the ones used at the top of the scaffold to hold the steel beams or wooden battens are known as Stirrup Head (U Head). With these Jacks adjustments in heights can be made either from the top or from the bottom of the scaffold to maintain the construction required levels. Base Jack also helps in maintaining the level of the scaffold on uneven floors.



Fix Base Plate



SCAFFOLDING COUPLERS



Swivel Coupler Forged



Fix Coupler Forged



Swivel Coupler Sheet Metal



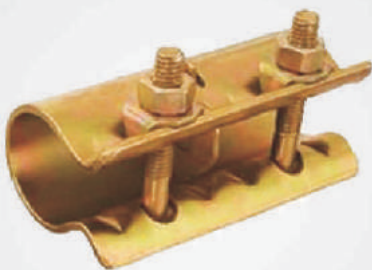
Fix Coupler Sheet Metal



Putlog Coupler with Forged Cap



Board Retaining Coupler with Forged Cup



Sleeve Coupler



Girder Coupler (To be used in Pairs)



Toe Board Clamp



Joint Pin

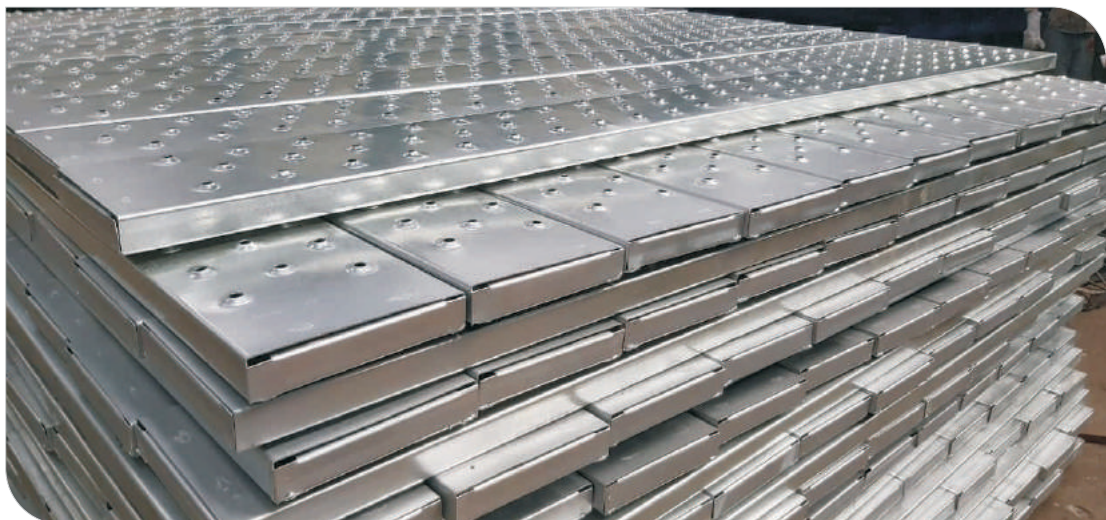
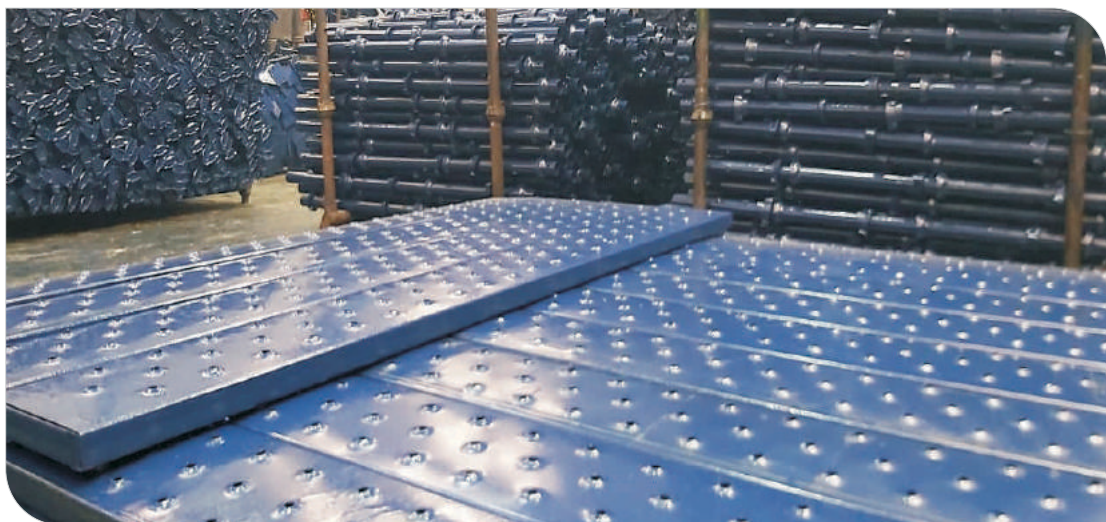
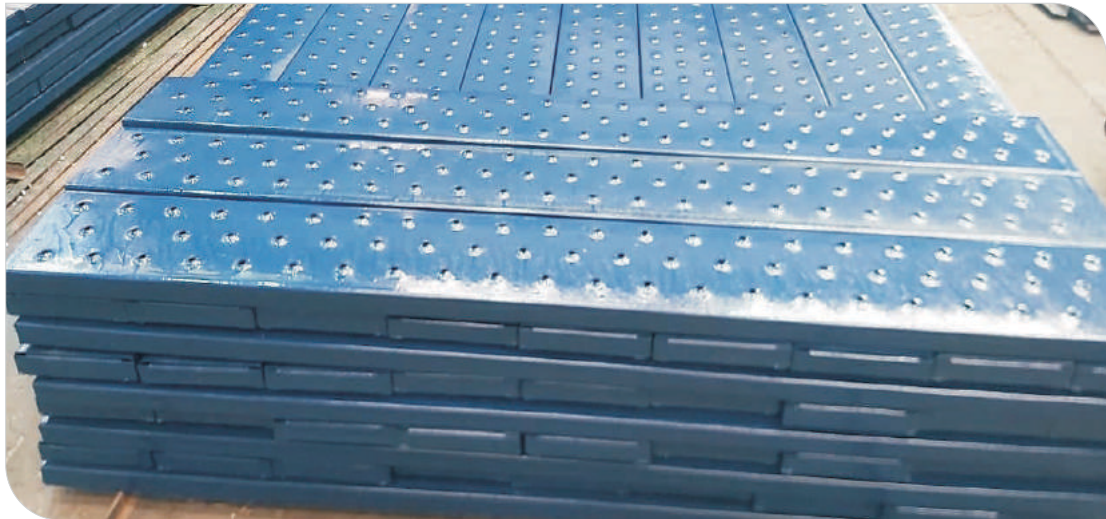
WALKWAY PLANKS / PLASTER PHALLY

Steel Walkway Planks / Plaster Phally are made out of heavy duty square hollow sections giving versatile support as a working platform for the labourers. These are tailor made items manufactured in various sizes as per the requirement of the structures. The readily available size is 300mm Wide x 3000mm Long.



ANTI SKID PLANKS

Anti-Skid Planks are made out of hot rolled coils and are available in Painted and Hot Dip Galvanized Surface Finish. These Planks are used to make a complete working platform at various heights having Anti-Skid Pressed Dimples on the surface which gives a proper grip to the workmen. The standard size of these Metal Planks are 225mm Wide x 38mm Thick x 1 / 2 / 2.5 / 3 and 4 Mtr. Long.



ADJUSTABLE PROPS



Electro Galvanised



Hot Dip Galvanised



DIP-Painted

Adjustable Steel Props also known as Telescopic Steel Props are the commonly used supporting device for all kinds of Formwork, Slabs, Beams, Walls and Columns. Our Props are specially made on hydraulic roll threading machine by which the life and load bearing capacity of the Props is greatly enhanced. We make Props of all sizes with various top supports depending upon customer's requirement.



Angle Head Props



Beam Head Prop



Flat Base Prop



U Head Prop

Model No.	Outer Tube (mm)	Inner Tube (mm)	Height of use (mm)		Safe Axial Load in Kgs.	
			Min.	Max.	Close	Extended
1	1500	2000	2000	3200	2950	2200
2	2000	2000	2000	3750	2875	2000
3	2000	2500	2500	4250	2475	1500
4	2000	3000	3000	4700	2275	1150

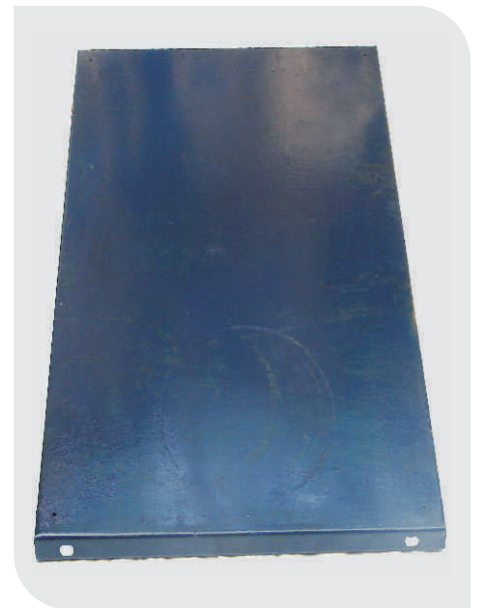
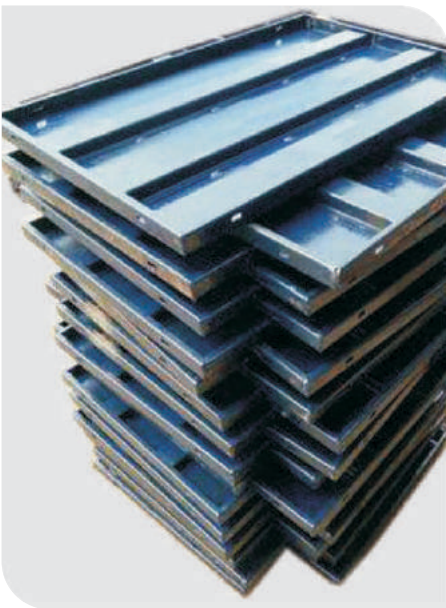
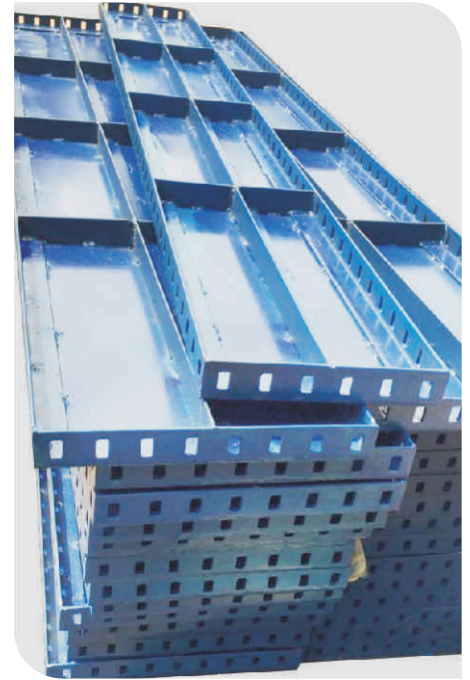
CUPLOCK STAIR TOWER

Cuplock Stair Tower - Cuplock is a very versatile system used for various purposes. Similarly, Cuplock Stair Tower is one of the very efficient and very handy systems used for various jobs to get easy access to various heights and depths. These towers are self supporting towers available from a minimum height of 3 Mtrs. to 30 Mtrs. They need to be braced at a few levels if they are erected on an uneven surface.



FORMWORK SYSTEMS

FORMWORK SYSTEMS - Bishan Shuttering & Centering Plates are fabricated as per the required sizes and design. We have in-house state of the art fabrication facilities with the latest sheet working machines to produce any size and shape of Formwork Systems. We also do special purpose Truss, Trestles, Box Girders and various other Heavy Fabrication as per the project requirements for permanent or temporary structures.

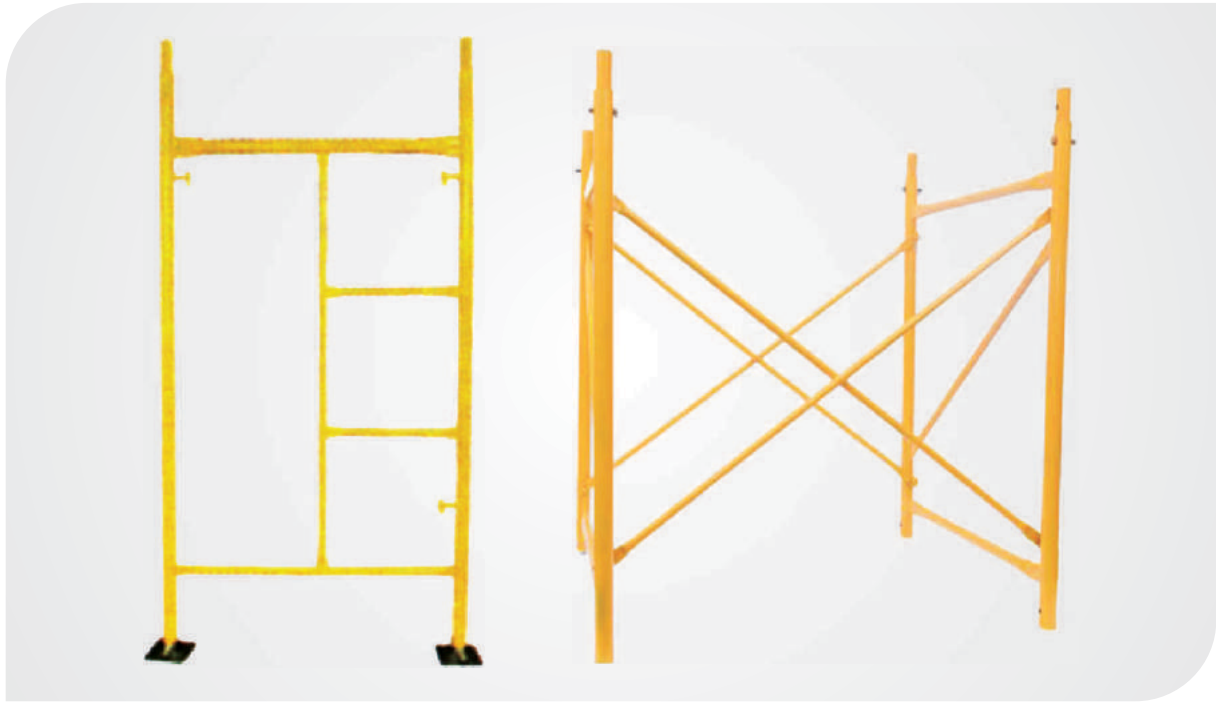


VARIOUS TYPE OF SHUTTERING & CENTERING PLATES

FORMWORK SYSTEMS



H FRAMES & LADDERS



H-Frames are basically tailor made items available in different sizes to suit customer requirements. These frames are connected with bracings made out of angles or pipes as required. Ladders also can be connected as shown below.

TELESCOPIC SPANS

Model No.	Outer Length (mm)	Inner Length (mm)	Min. Opening	Max Opening	Unit Weight (Kgs)
1	2000	2000	2000	3500	36
2	2350	2350	2350	4200	40



SCAFFOLDING & FORMWORK FITTINGS



Anchor Nut



Wing Nut



Tie Rod



Water Stopper



Waller Plate



Top Cup



Bottom Cup



Ledger Blade



Prop Nut



G Pin



Prop Pin with Wine



Jack Nut 32 mm, 34 mm, 38 mm



Single Clamp



Flip Lock Pin



Bolts for Various Clamps

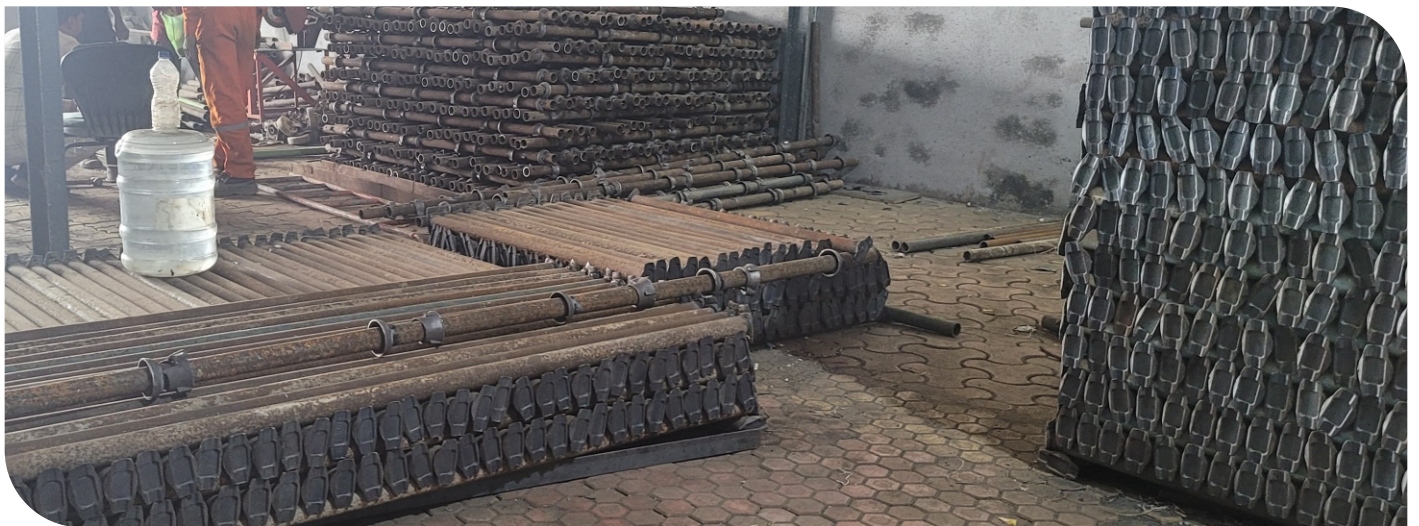
GALLERY



GALLERY

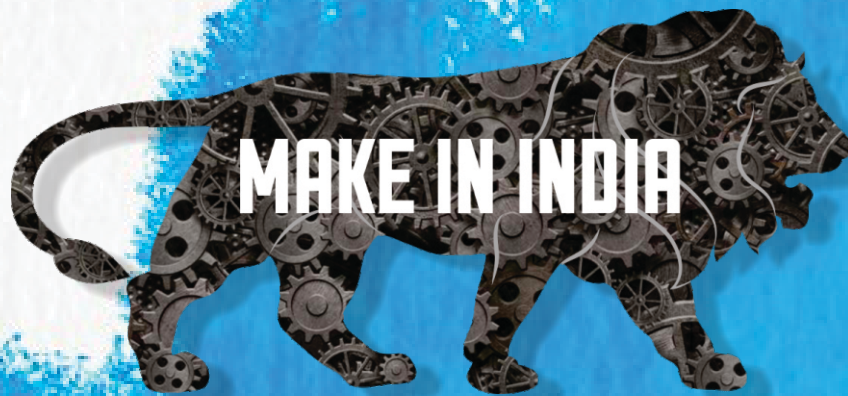


GALLERY





SARAH ENTERPRISES



GODOWN :

Kohinoor Estate S.N.181, Gala No.02 Opp. Tool Plaza,
Village Dhansar, Taluka Panvel Dist Raigad - 410208

OFFICE :

OFFICE Address: 603/A Ammar Complex, near Kandhari Bldg,
Mujahid Road, Kausa, Mumbra, District - Thane 400612

GST No : 27BODPK8044Q1ZB

Contact : +91 7506768114 / +91 8657748070

E.mail : sarahenterprises2k20@gmail.com
